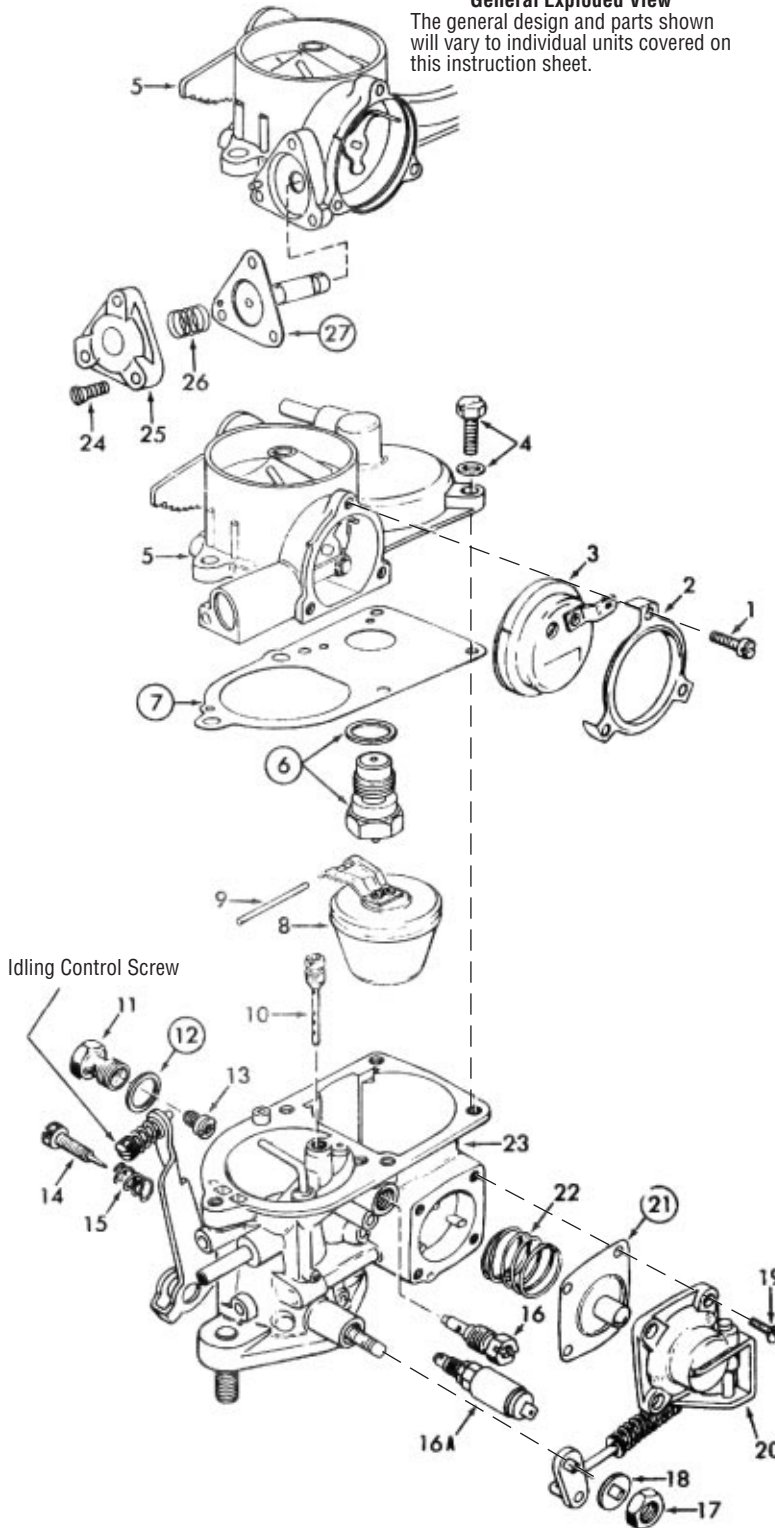


28 PICT -1, -2 30 PICT -1 Solex Carburetor

General Exploded View

The general design and parts shown will vary to individual units covered on this instruction sheet.



IDLING ADJUSTMENT 28 PICT, -1, -2. 30 PICT-1

1. Warm up engine: check if the automatic choke is fully open.
2. Set idling speed to 850 RPM with the idling control screw. (see exploded view)
3. Turn volume control screw (item #14) to right until speed starts to drop.
4. From this position, turn volume control screw (item #14) to the left until engine runs fastest.
5. If necessary, regulate the engine speed (800-900 RPM) again, with the idling control screw.

NOMENCLATURE

Ref. No.

1. Screw (3) - retaining ring
2. Retaining ring - cover
3. Cover with spring and heater element
4. Screw & lockwasher (5) - upper body
5. Upper body assembly
6. Needle, seat & gasket assembly
7. Gasket - carburetor body
8. Float
9. Pin - float lever
10. Jet - air correction
11. Carrier - main jet
12. Gasket - carrier
13. Jet - main
14. Screw - volume control
15. Spring - volume control screw
16. Jet - pilot
- 16A. Valve - idling cut-off 30 PICT-1
17. Nut - throttle shaft lever
18. Washer - throttle shaft lever
19. Screw (4) - cover
20. Cover - with lever & linkage
21. Diaphragm - pump
22. Spring - pump diaphragm
23. Carburetor main body assembly
24. Screw (3) - cover
25. Cover - vacuum diaphragm
26. Spring - vacuum diaphragm
27. Vacuum diaphragm - choke
28. Plug main jet
29. Gasket - plug
30. Jet - main
31. Air screw - bypass
32. O-Ring - volume control screw
33. Valve - bypass air cut-off
34. Plug - volume control screw
35. Screw - volume control
36. O-Ring - volume control screw
37. Cotter pin
38. Washer (2)
39. Spring - connector rod
40. Screw (4) - cover
41. Cover - with lever & pin
42. Diaphragm - pump
43. Spring - diaphragm
44. Carburetor main body assembly.

CLEANING

Cleaning must be done with carburetor disassembled. Soak parts long enough to soften and remove all foreign material. Use a carburetor cleaning solvent. Make certain the throttle body is free of all hard carbon deposits. Wash off in suitable solvent. Blow out all passages in castings with compressed air and check carefully to insure thorough cleaning of obscure areas. **CAUTION:** Do not soak solenoids, switches, float, or rubber parts in solvents.

REASSEMBLY

Using essentially the reverse order of disassembly giving special attention to the following special instructions.

SPECIAL INSTRUCTIONS

Make sure all jet orifices are clean and open. Clean with compressed air. Do not use wires to check for clogged orifices.

When installing the pump diaphragm and spring (22) make sure the larger end of spring is properly seated in the carburetor body cavity. Be sure to install the diaphragm (21) with plunger toward pump cover (20).

Check for a worn spot (depression) on the float lever where it makes contact with the fuel inlet needle valve. Replace float assembly if necessary.

Check if the thermostat spring in housing (item #3) for damage. If it is distorted or "kinked", replace the assembly.

Also, make sure the electrical heating element is not broken. This can be checked with an ohmmeter or connected to a correct voltage battery for a few minutes to see if it warms up. (Be sure to ground the inside metal part of the housing in order to complete the circuit.) When installing assembly with spring and heater element, carefully rotate assembly counterclockwise, being sure the hook on coil end engages with the lever on choke shaft. Continue rotating approximately 1/8 - turn more until index marks align. Then tighten screws securely.

30 PICT -2, -3 34 PICT -3, -4 SOLEX CARBURETOR

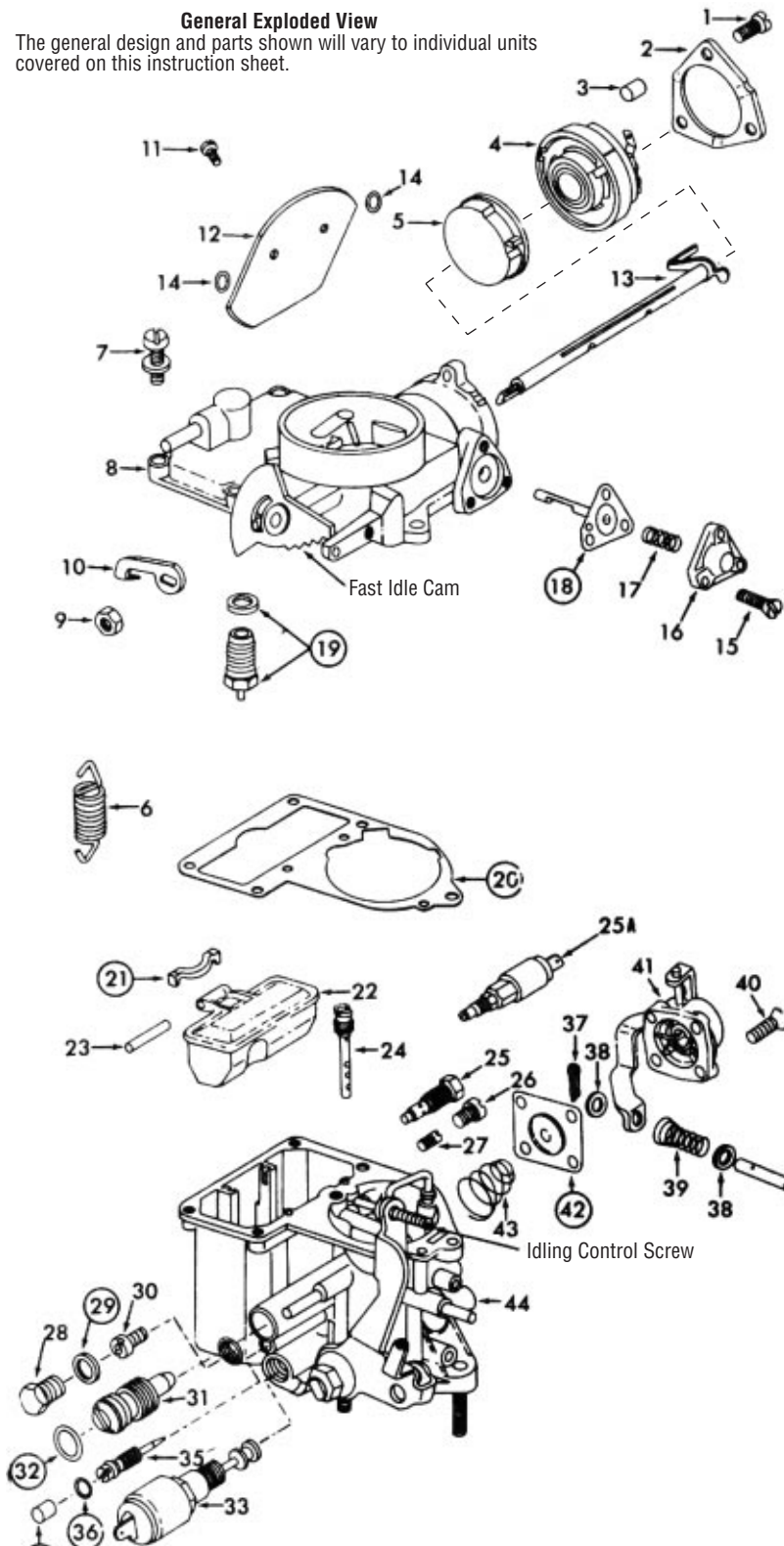
2121 Harbor Blvd. , Costa Mesa, CA 92627
 Phone (949)642-1835 • Fax (949)642-1847
 Internet address: www.KymcoVW.com



30 PICT -2, -3 34 PICT -3, -4 Solex Carburetor

General Exploded View

The general design and parts shown will vary to individual units covered on this instruction sheet.



NOMENCLATURE

- Ref. No.
1. Screw (3) - retaining ring
 2. Retaining ring - cover
 3. Spacer bush - retaining ring
 4. Cover - with spring and heater element
 5. Plastic cap
 6. Spring - throttle return
 7. Screw & Lockwasher (5) - upper body
 8. Upper body assembly.
 9. Nut - choke shaft
 10. Operating lever - fast idle cam
 11. Screw (2) - choke valve
 12. Valve - choke
 13. Shaft - choke
 14. Spacewasher (2) - choke valve
 15. Screw (3) - cover
 16. Cover - vacuum diaphragm
 17. Spring - vacuum diaphragm
 18. Vacuum diaphragm - choke
 19. Needle, seat & gasket assembly.
 20. Gasket - carburetor body
 21. Lug - float pin
 22. Float
 23. Pin - float lever
 24. Jet - air correction
 25. Jet - aux. idle speed fuel
 - 25A. Valve - idle cut off (30 PICT -2, -3)
 26. Plug - aux. fuel jet
 27. Jet - auxiliary fuel
 28. Plug main jet
 29. Gasket - plug
 30. Jet - main
 31. Air screw - bypass
 32. O-Ring - volume control screw
 33. Valve - bypass air cut-off
 34. Plug - volume control screw
 35. Screw - volume control
 36. O-Ring - volume control screw
 37. Cotter pin
 38. Washer (2)
 39. Spring - connector rod
 40. Screw (4) - cover
 41. Cover - with lever & pin
 42. Diaphragm - pump
 43. Spring - diaphragm
 44. Carburetor main body assembly.

CLEANING

Cleaning must be done with carburetor disassembled. Soak parts long enough to soften and remove all foreign material. Use a carburetor cleaning solvent. Make certain the throttle body is free of all hard carbon deposits. Wash off in suitable solvent. Blow out all passages in castings with compressed air and check carefully to insure thorough cleaning of obscure areas. **CAUTION:** Do not soak solenoids, switches, float, or rubber parts in solvents.

REASSEMBLY

Using essentially the reverse order of disassembly giving special attention to the following special instructions.

SPECIAL INSTRUCTIONS

Make sure all jet orifices are clean and open. Clean with compressed air. Do not use wire to check for clogged orifices.

When installing the pump diaphragm and spring (43) make sure the larger end of spring is properly seated in the carburetor body cavity. Be sure to install the diaphragm (42) with plunger toward pump cover (41).

Check for a worn spot (depression) on the float lever where it makes contact with the fuel inlet needle valve. Replace float assembly, if necessary. Float assembly may be purchased at local VW dealer. P/N 113-129-391 rectangular shaped float (22).

Proper needle seat gasket must be used for specific carburetor. Use the following chart to determine the correct gasket. Carburetor model

30 PICT-2	1.0mm	.040"
30 PICT-3	1.5mm	combine 1.0 and .5 mm gaskets
34 PICT-3	0.5mm	.020"

Check the thermostatic spring in housing (item #40 for damage. If it is distorted or "kinked", replace the assembly.

Also, make sure the electrical heating element is not broken. This can be checked with an ohmmeter or connected to a correct voltage battery for a few minutes to see if it warms up. (Be sure to ground the inside metal part of the housing in order to complete the circuit.) When installing assembly with spring and heater element, carefully rotate assembly counterclockwise, being sure the hook on coil end engages with the lever on choke shaft. Continue rotating approximately 1/8 - turn more until index marks align. Then tighten screws securely.

IDLING ADJUSTMENT 30 PICT-3 34 PICT-3

1. Check if the automatic choke is fully open.
 2. Turn idling control screw (see exploded view) out until there is clearance between screw and fast idle cam.
 3. Then turn idling control screw in until it just touches the fast idle cam.
 4. From third position, turn screw in further 1/4 of a turn.
 5. Turn volume control screw (item #35) in slowly until it comes to a stop, and then turn it back 2.5 to 3 complete turns.
 6. Start engine and set idle speed (900 RPM) by turning the bypass screw (item #31).
 7. By turning volume control screw (item #35), adjust to the highest idle speed, then turn in until the engine speed drops by 20-30 RPM.
 8. Reset the correct idle speed by turning the bypass screw (item #31).
- (Note 30 PICT-2 use procedure)